

aquatica®

Function, Form & Fashion



Dynamo RD-300
Shower Head

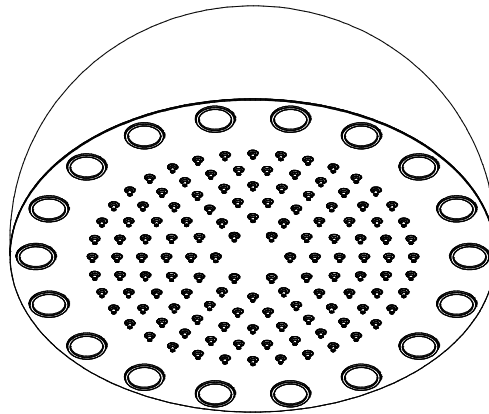
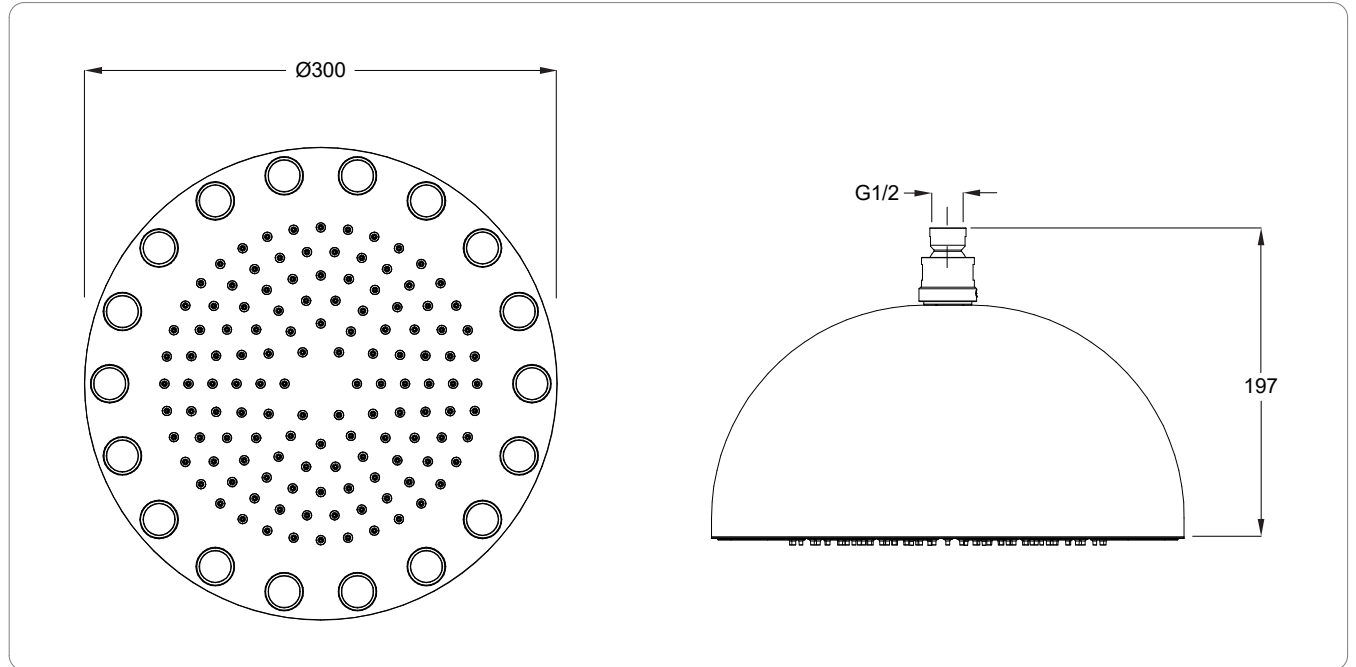
Installation & Care Manual
Europe / International

Dynamo RD-300

Shower Heads

PARTS LIST

 MEASUREMENTS: mm



SPECIFICATIONS

Recommended operational pressure	1-5 bar
Maximum test pressure	16 bar
Maximum hot water temperature	70 °C
Recommended temperature	50-60 °C
Pressure difference between hot and cold water	max. 1,5 bar

IMPORTANT NOTE

- Installation to be performed by qualified personnel
- Before connecting to mains, bleed the pipes to avoid damage.

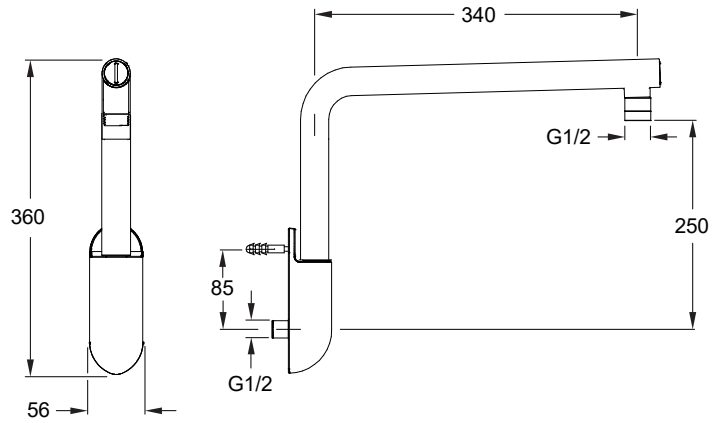
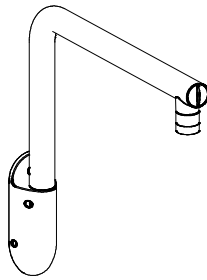


Dynamo RD-300

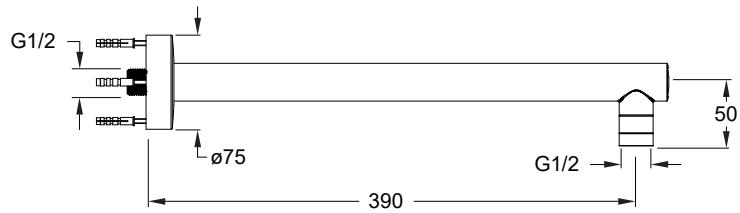
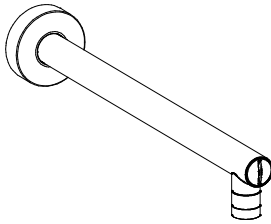
Shower Heads

aquatica®
Function, Form & Fashion

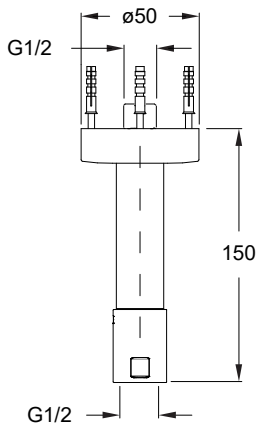
Short Wall-Mounted Shower Arm



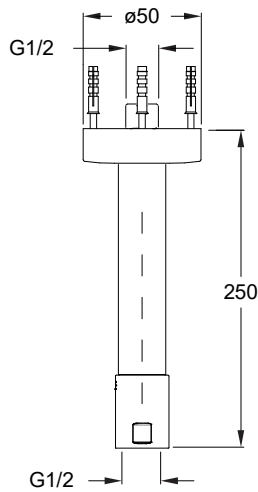
High Wall-Mounted Shower Arm



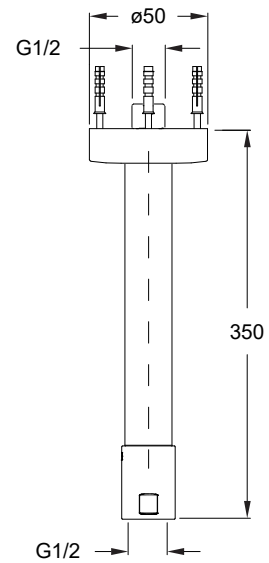
Ceiling Mounted Short Shower Arm



Ceiling Mounted Medium Shower Arm



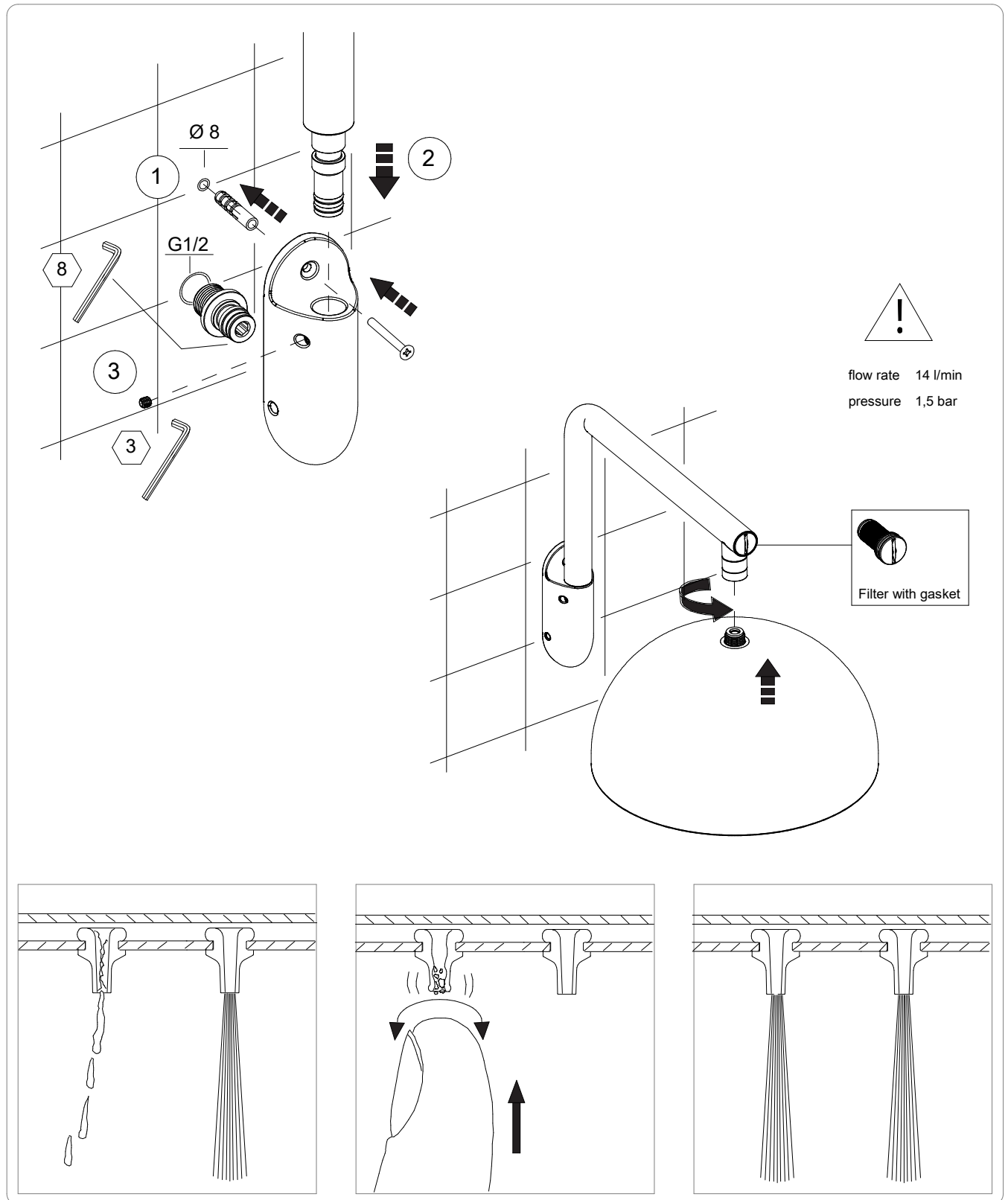
Ceiling Mounted Large Shower Arm



Dynamo RD-300

Shower Heads

INSTALLATION



aquatica®

Function, Form & Fashion

